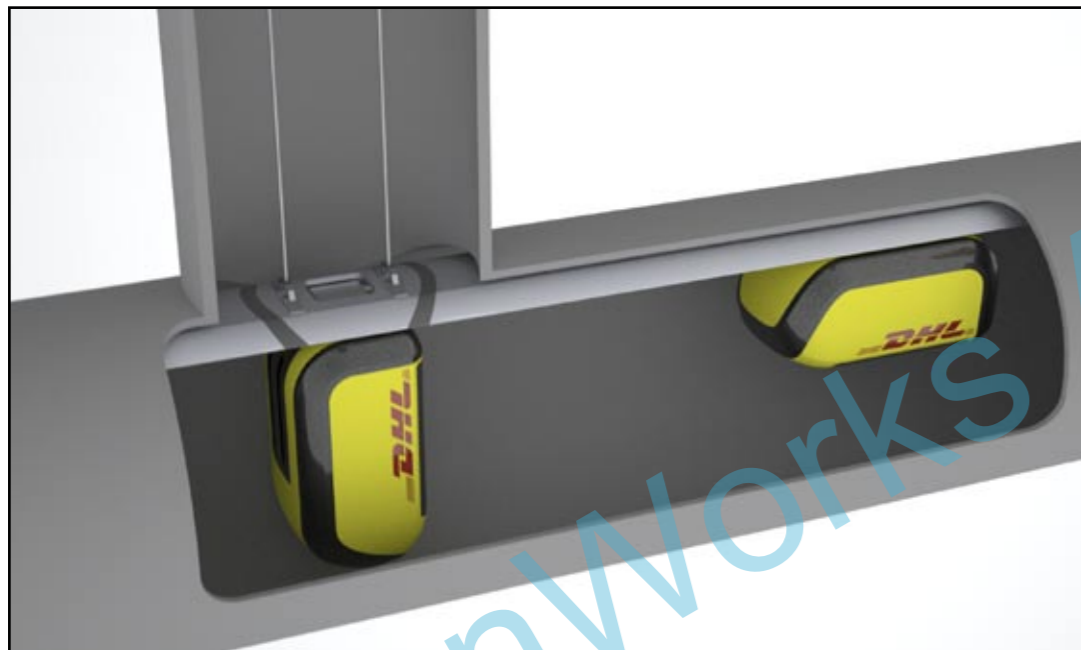
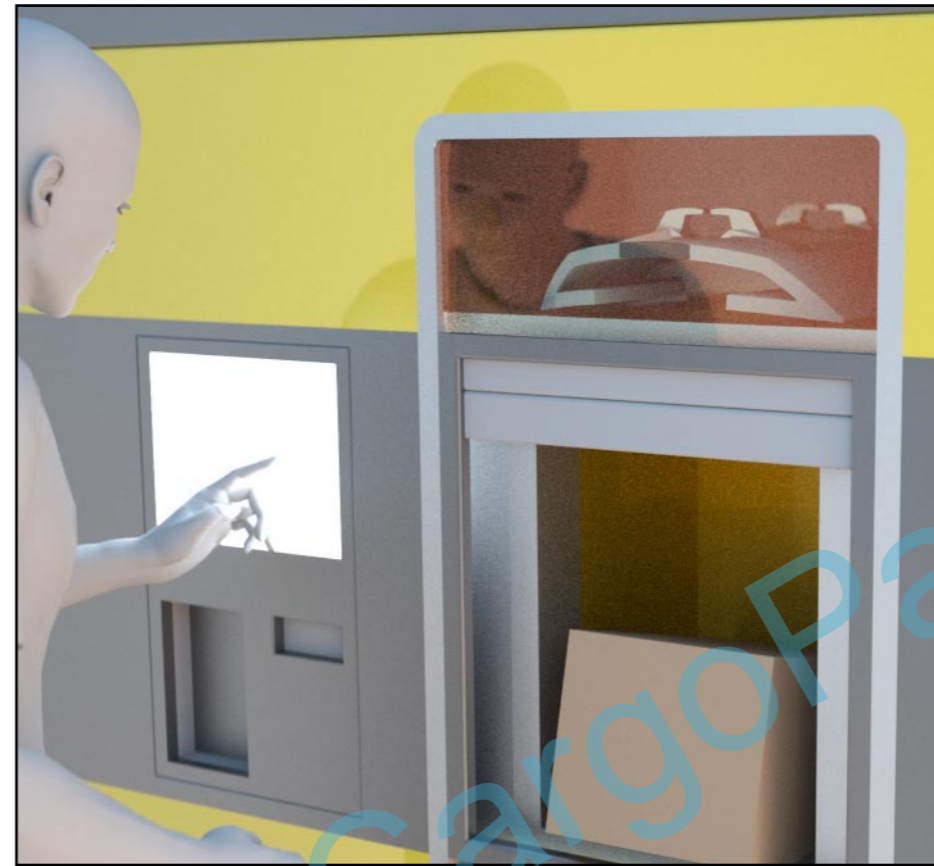
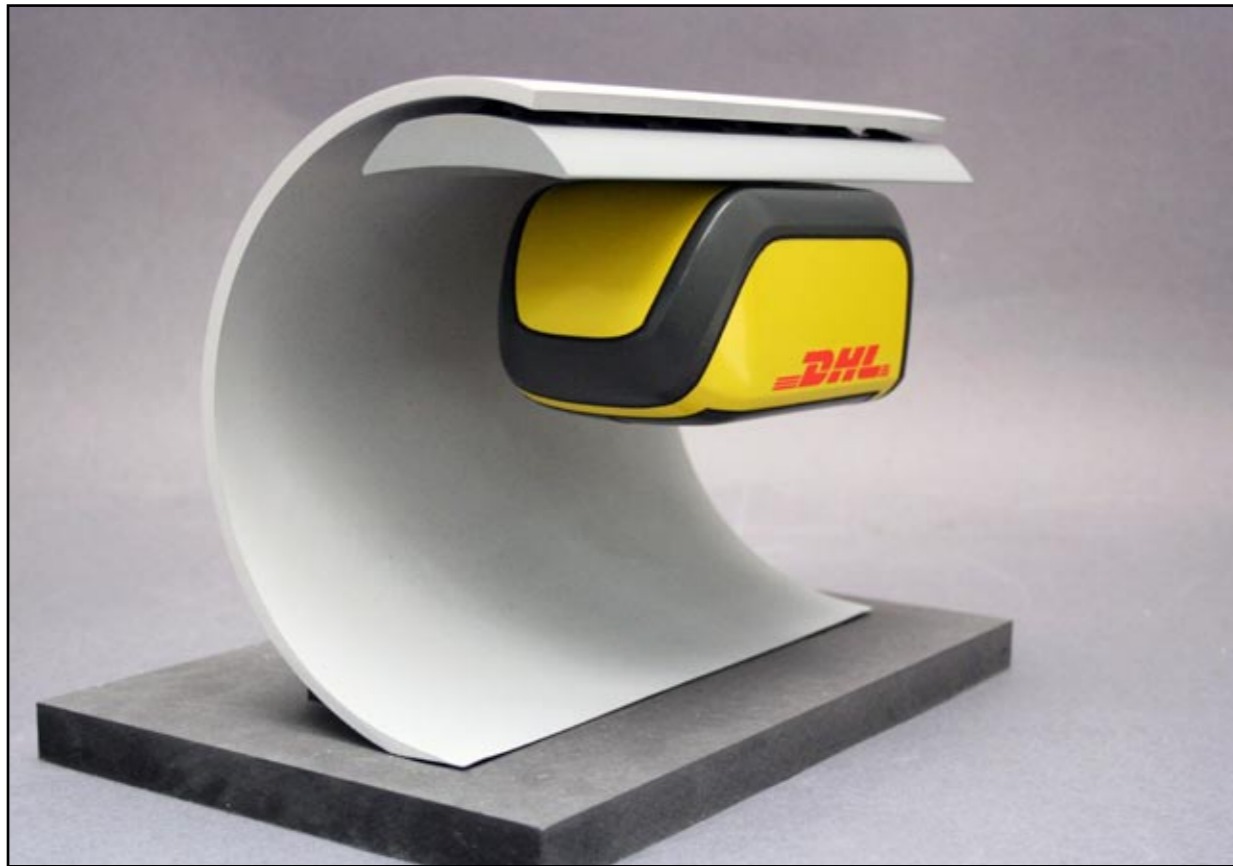




VisionWorks Awards Cargo 2020

**URBAN MOLE**

in 2020 our goods go underground



**1** When a unit reaches its target, it turns from „riding“ into „sleeping“ mode to waste few space.

**2** before leaving the underground the Mole becomes cleaned.

**3** Stations can store pakets for a while

## What?

The Mole is a city-intern courier and delivery system which uses the canalization as a „new-old“ infrastructure. The mole itself is a transportation unit, which can be filled with goods and then be sent from a packing-station, a postoffice, or even a privat builing with advanced sewer-connection. It finds autonomously the way to it's destination.

## Why?

In 2020 the mega cities will have to handle a huge amount of traffic each day. At the same time the demand for speed and individuality will rise. New infrastructures will have to be developed. Just like the Urban Mole, which is independent from daily traffic and employees.

*With the Urban Mole everyones goods may become as flexible as Data is already today!*

Future scenarios might look like this:

A craftsman is ordered to repair something. When he arrives at the customer, he recognizes, that he needs a special tool. So he calls his company to send it to the next Molestation.

or...  
You are cooking, but you run out of an ingredient. It takes only 1 minute to order it and another 5 minutes until it waits for you in the next Molestation around the corner.

## Size?

The maximum packet size is a little bigger than an average shoe box. It can carry typical amazon products like books, dvd's and... of course shoes.

## Dirty?

The positioning of the Mole at the top of the tube prevents it basically from contamination. The unit is a hermetically sealed box with a round shape and a lotus-effect surface. This makes the cleaning process easier.

Furthermore the customer won't ever get in contact with the outer shell. When its ready to be filled at a packing station one can touch the mole's interior through a special port.

## Infrastructure?

The pipe-system is structured like the network of roads - the more traffic the bigger the pipe. Thats why the mole depends on those, which mostly run under busy streets.